

# Washoe ET Project



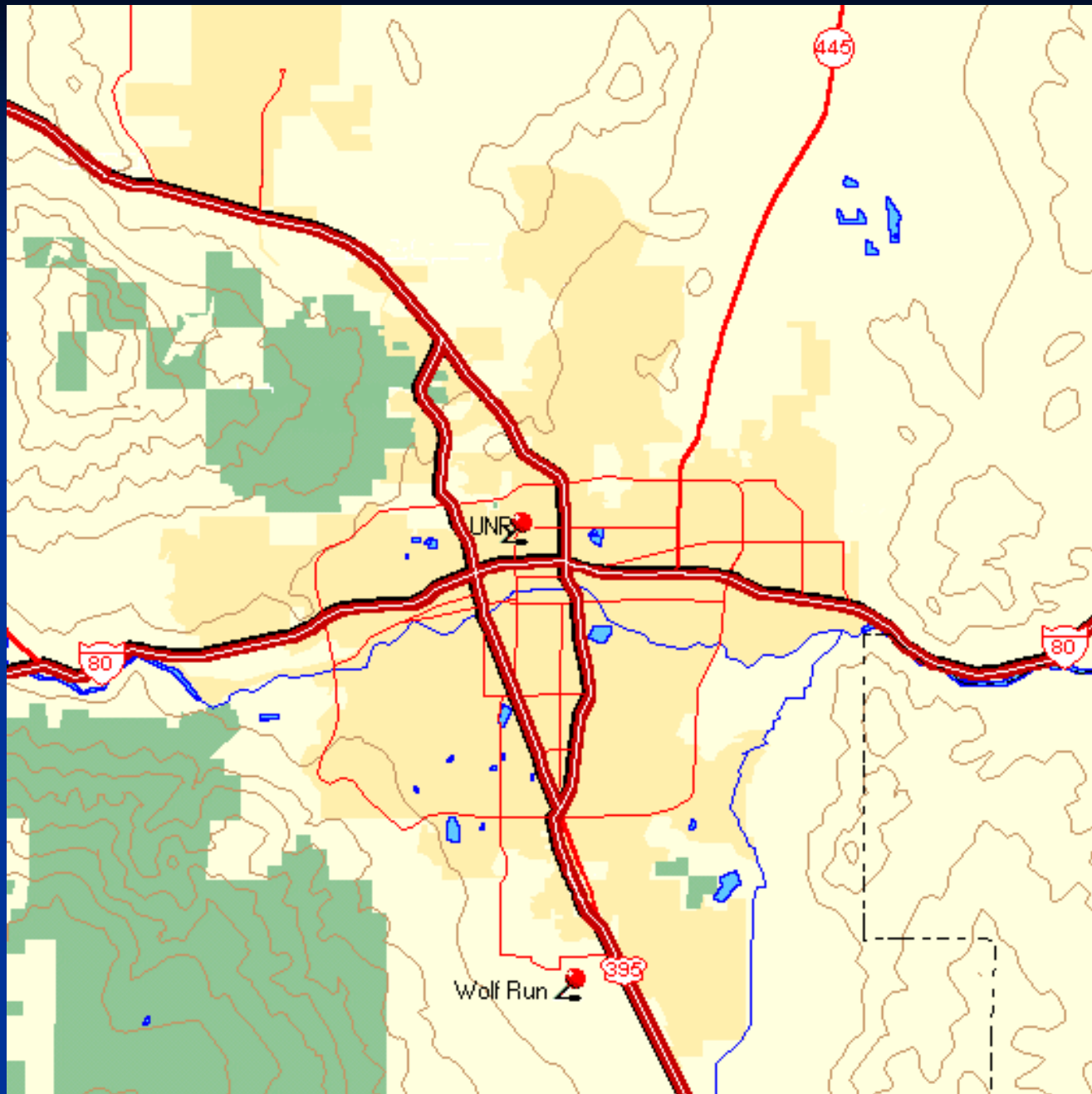
# Background

**Washoe ET Project has been operating continually since 1999 with support from the Regional Water Planning Commission and NNWPC/WRWC.**

**It is a cooperative effort between the WRWC, UNR Cooperative Extension and the Desert Research Institute**

**The project currently consists of a website and two weather stations:**

- ∅ one located at Valley Road near the UNR campus,**
- ∅ the second at Wolfrun Golf Course**



If today is your watering day,  
water for a total of:



Split up the watering times into  
three to five cycles or more per day.

Irrigation rates based on manufacturers information,  
local weather stations and sprinklers operating  
at 85% efficiency.

For more information call:  
University of Nevada Cooperative  
Extension at 784-4848

Your actual watering needs may vary according to  
water pressure, applied gallons per minute, nozzle size,  
coverage, soil type and slope of the land.

When setting your timer at the suggested "run-time,"  
use short but frequent watering cycles for best results.  
For example, if your sprinkler type indicates watering  
for 20 minutes, split-up the run-time into two to four  
increments, i.e., two at 10 minutes or four at five  
minutes if possible, allowing at least one hour between  
watering. This allows the water to soak deep into the  
soil and prevents run-off.

#### Calculate your runtime

Water Pressure	<input type="text" value="30"/>	psi
Delivery Rate	<input type="text" value="3.6"/>	gpm
Sprinkler Spacing	<input type="text" value="15"/>	feet
Spray Radius	<input type="text" value="15"/>	feet
Et	<input type="text" value="0.35"/>	inches per day
Irrigation Efficiency	<input type="text" value="85"/>	percent
	<input type="button" value="Calculate"/>	
Runtime result	<input type="text"/>	minutes per day

How is this calculated?

## When do I water?

Monday

No Watering

Tuesday, Thursday, and Saturday

Even Residential Addresses

Wednesday, Friday, and Sunday

Odd Residential Addresses

The Washoe E.T. project is a network of weather  
stations located in the region surrounding Reno, NV that  
monitor evapotranspiration rates. These rates can then  
be used as a tool to estimate lawn and crop watering  
needs.

To see a map of the weather station sites, [click here](#)

For gross estimated runtimes for small to medium  
turf areas, [click here](#)

For more information about the Washoe E.T. project or  
to print out our brochure, [click here](#)

This project is sponsored by:

- [University of Nevada Cooperative Extension,](#)
- [UNR College of Agriculture, Biotechnology and  
Natural Resources,](#)
- [Washoe County Department of Water Resources,](#)
- [Western Regional Climate Center,](#)
- [Western Regional Water Commission,](#)
- [Nevada Landscape Association](#)

# Website Statistics

## January – June 2013

- ∅ Washoe E.T. pages viewed – 335
- ∅ Washoe E.T. site visits – 164
- ∅ Washoe E.T. visits from unique visitors – 145
- ∅ Average time spent on Washoe E.T. pages – 2:05 minutes
- ∅ New visits – 153
- ∅ Returning visits – 33

## January – June 2012

- ∅ Washoe E.T. pages viewed – 353
- ∅ Washoe E.T. site visits – 167
- ∅ Washoe E.T. visits from unique visitors – 138
- ∅ Average time spent on Washoe E.T. pages – 1:00 minutes
- ∅ New visits – 128
- ∅ Returning visits – 39

# Recommendations

*Staff recommends the continued funding of the Washoe E.T. Project in support of the Water Management Plan's water conservation objectives.*

## Additional Recommendations:

- ∅ Re-establish third weather station at Lazy 5 Regional Park in Spanish Springs Valley.
- ∅ Possible addition of fourth weather station in Washoe Valley at Wilson Commons Park.
- ∅ Direct staff to negotiate agreements with DRI or other interested parties to utilize the remaining weather stations in support of the Water Management Plan goals.